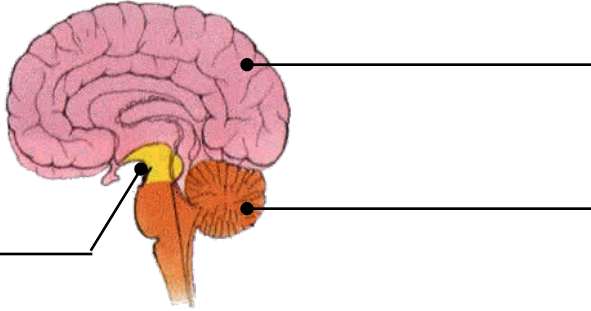


PARTS OF THE BRAIN

Label the 3 main sections of the brain. (1 point each)



Below: Write the part of the brain that each scenario represents. Include (1 of the three sections of the brain, AND their individual parts. (Example: The Forebrain - Cerebrum)

4. Christy is slowly developing an impairment in her ability to perform finely coordinated movements, such as cutting garlic into very small pieces. What part of the brain will doctors find the problem?

5. Alejandro was in a car accident and can no longer control his own heart rate or breathing. What did Alejandro probably damage? _____
6. After a skateboarding accident, Nikka was left with brain damage. Now Nikka has trouble judging the emotions of others, even when she can see their facial expressions. What did Nikka most likely damage?

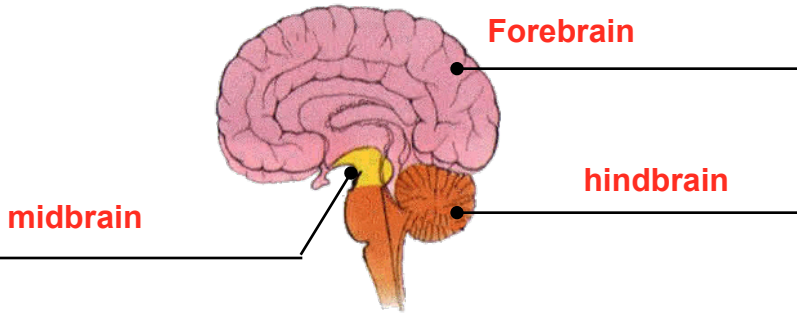
7. After a freak canoe accident, the Barry hippocampus was lost at sea. Barry has recovered in all respects, except for one thing. What is the new guy having problems with?

8. After an evil scientist destroys part of Bryce's huge brain, Bryce finds that he is always hungry and he eats much tons than before. What did the scientist destroy?

9. One moment Dylan is happy, the next moment she feels sad. First she is angry, and then appalled. What is probably wrong with Dylan? _____
10. When Cade was tackled during a football game, he hit the back of his head on the ground, which resulted in a concussion. Cade now has trouble with his vision. Cade probably injured his _____ lobe.
11. Veronica bent over in her garden to pick strawberries but bumped her head on a bush and passed out. When she regained consciousness, she could not let go of the strawberries in her left hand; the hand would not open or close. She most likely injured cells in her _____.
12. Luke is learning to play the piano. Recent research suggests that the organization of Luke's somatosensory cortex may change to allow more neurons there to respond to touch. Which lobe of Luke's cerebral cortex contains the somatosensory cortex? _____
13. A jeweler is repairing a plastic chain with very tiny links. The jeweler's _____ would be very important in her ability to do this repair.
14. Damage to which part of the brain would have the LEAST effect on a Bernie's ability to juggle?

PARTS OF THE BRAIN

Label the 3 main sections of the brain. (1 point each)



Below: Write the part of the brain that each scenario represents. Include (1 of the three sections of the brain, AND their individual parts. (Example: The Forebrain - Cerebrum)

4. Christy is slowly developing an impairment in her ability to perform finely coordinated movements, such as cutting garlic into very small pieces. What part of the brain will doctors find the problem?
4. Cerebellum - and or Hindbrain
5. Alejandro was in a car accident and can no longer control his own heart rate or breathing. What did Alejandro probably damage?
5. medulla - hindbrain
6. After a skateboarding accident, Nikka was left with brain damage. Now Nikka has trouble judging the emotions of others, even when she can see their facial expressions. What did Nikka most likely damage?
6. Limbic System - amygdala - Forebrain
7. After a freak canoe accident, the Barry hippocampus was lost at sea. Barry has recovered in all respects, except for one thing. What is the new guy having problems with?
7. forming new memories
8. After an evil scientist destroys part of Bryce's huge brain, Bryce finds that he is always hungry and he eats much tons than before. What did the scientist destroy?
8. hypothalamus
9. One moment Dylan is happy, the next moment she feels sad. First she is angry, and then appalled. What is probably wrong with Dylan?
9. limbic system - Forebrain
10. When Cade was tackled during a football game, he hit the back of his head on the ground, which resulted in a concussion. Cade now has trouble with his vision. Cade probably injured his **10. Occipital** lobe.
11. Veronica bent over in her garden to pick strawberries but bumped her head on a bush and passed out. When she regained consciousness, she could not let go of the strawberries in her left hand; the hand would not open or close. She most likely injured cells in her **Right frontal** lobe.
12. Luke is learning to play the piano. Recent research suggests that the organization of Luke's somatosensory cortex may change to allow more neurons there to respond to touch. Which lobe of Luke's cerebral cortex contains the somatosensory cortex?
12. parietal
13. A jeweler is repairing a plastic chain with very tiny links. The jeweler's **Cerebellum Forebrain** would be very important in her ability to do this repair.
14. Damage to which part of the brain would have the LEAST effect on a Bernie's ability to juggle?
14. Hippocampus- Forebrain